



ADA square push plates (4.75")

Automatic swinging doors

Description

ADA square push plates improve overall door access, enhance accessibility, and seamlessly integrate with automatic door operator activation. Our ADA compliant push plates are available in a variety of design options, including an alternate International Symbol of Access (ISA) icon.

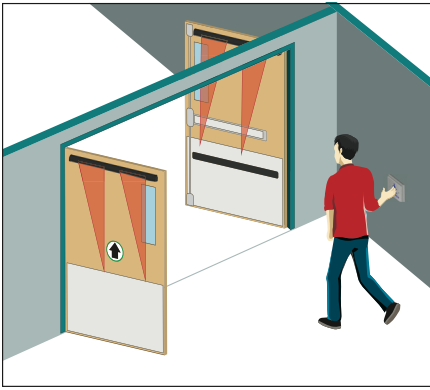
ADA push plates may be hard-wired to the door operator or connected to dormakaba wireless transmitters.

Features & benefits

- 1/16" thick stainless steel for maximum durability.
- Concealed fasteners to minimize vandalism.
- Complete kits available including plates, mounting boxes, and optional wireless devices for ease of ordering.
- Various text, graphic, and ISA icon options available.
- Compatible with both surface and flush mount boxes.



Applications



Low energy doors



Wireless compatibility



Request to exit

Technical specifications

Faceplate material 16 gauge, 304 2B Stainless Steel

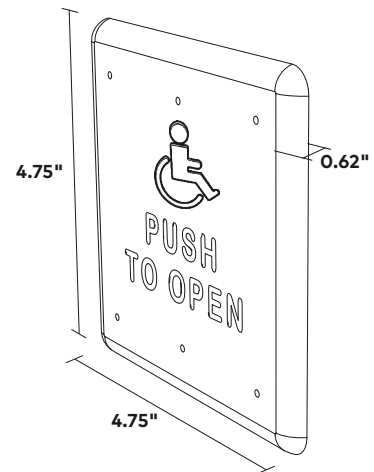
Backplate material 1/8" thick, Aluminum

Mounting screws Stainless Steel, 6-32 x 1" & 8-32 x 1"
Allen head size: 5/64"

Cherry switch Single-pole, 15 A, COM / NO / NC,
UL Recognized

Compatible wireless frequencies 900, 433, or 300 MHz

ADA square push plate dimensional drawing (4.75")



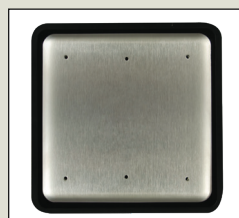
4.75 square push plates



DX3339-070
"PUSH TO OPEN"
TEXT & ISA ICON



DX3339-072
ISA ICON



DX3339-073
PLAIN FACE



DX3339-071
"PUSH TO OPEN" TEXT
& ISA ICON, WHITE
ON BLUE



DX3339-074
"PUSH TO OPEN" TEXT &
ALTERNATE ISA ICON



dormakaba USA Inc.
Dorma Drive, Drawer AC
Reamstown, PA 17567
844-SPECNOW
www.dormakaba.us

dormakaba Canada
1680 Courtney Park Dr. Unit 13
Mississauga, ON L5T 1R4
800.387.4938
www.dormakaba.ca